

Net Zero at the Workplace

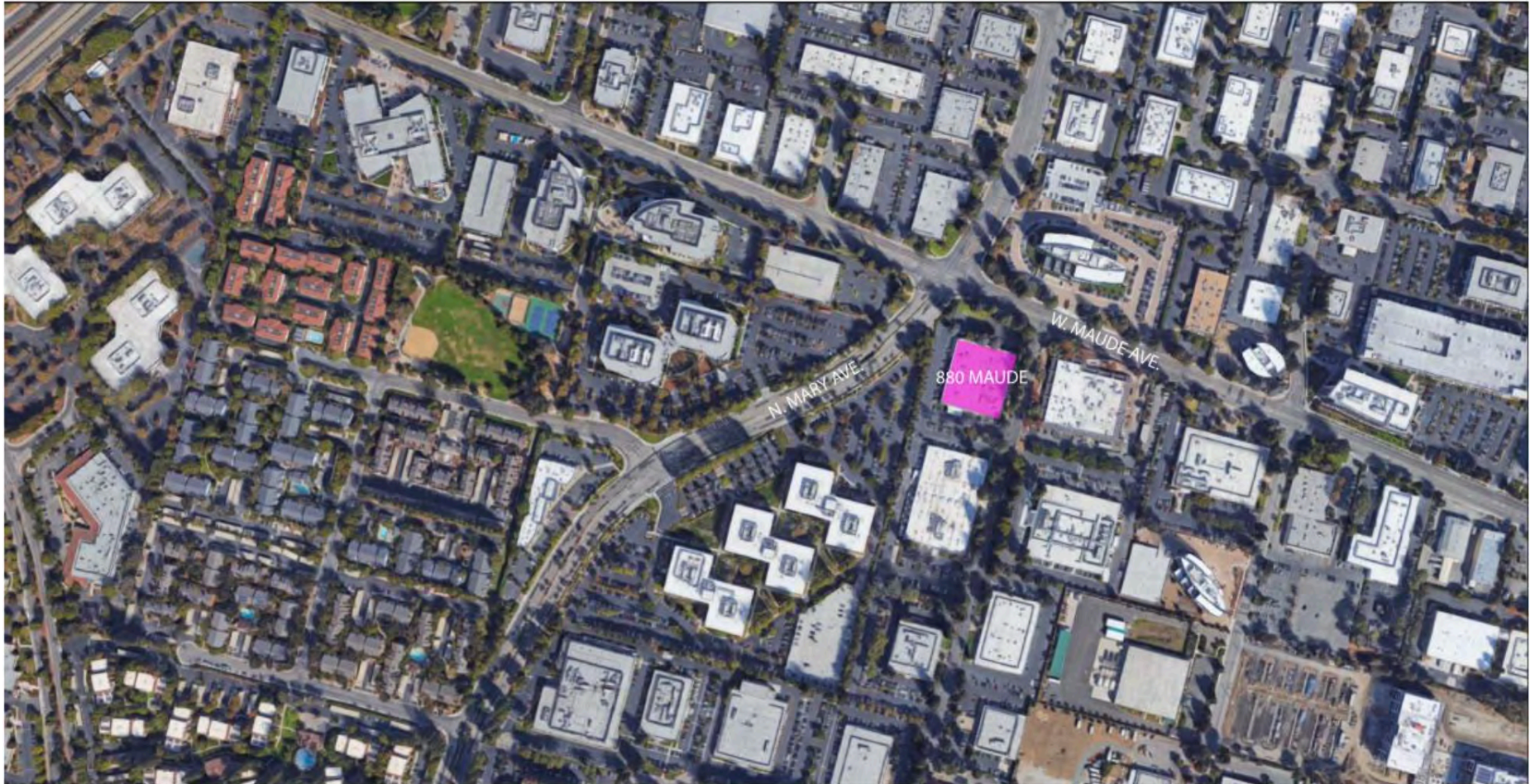
- Community
- Connection
- Nature
- Transformation

Architecture & Design

Ben Louie & Kaileen Yen

“This is the first piece of property LinkedIn actually owns in Sunnyvale, so we have more control over what we can do with the building. Instead of tearing down and doing a big new building, we wanted to use the existing structure and bring natural light and sustainability features.”

-Katie Ferrick, LinkedIn’s senior manager of community relations

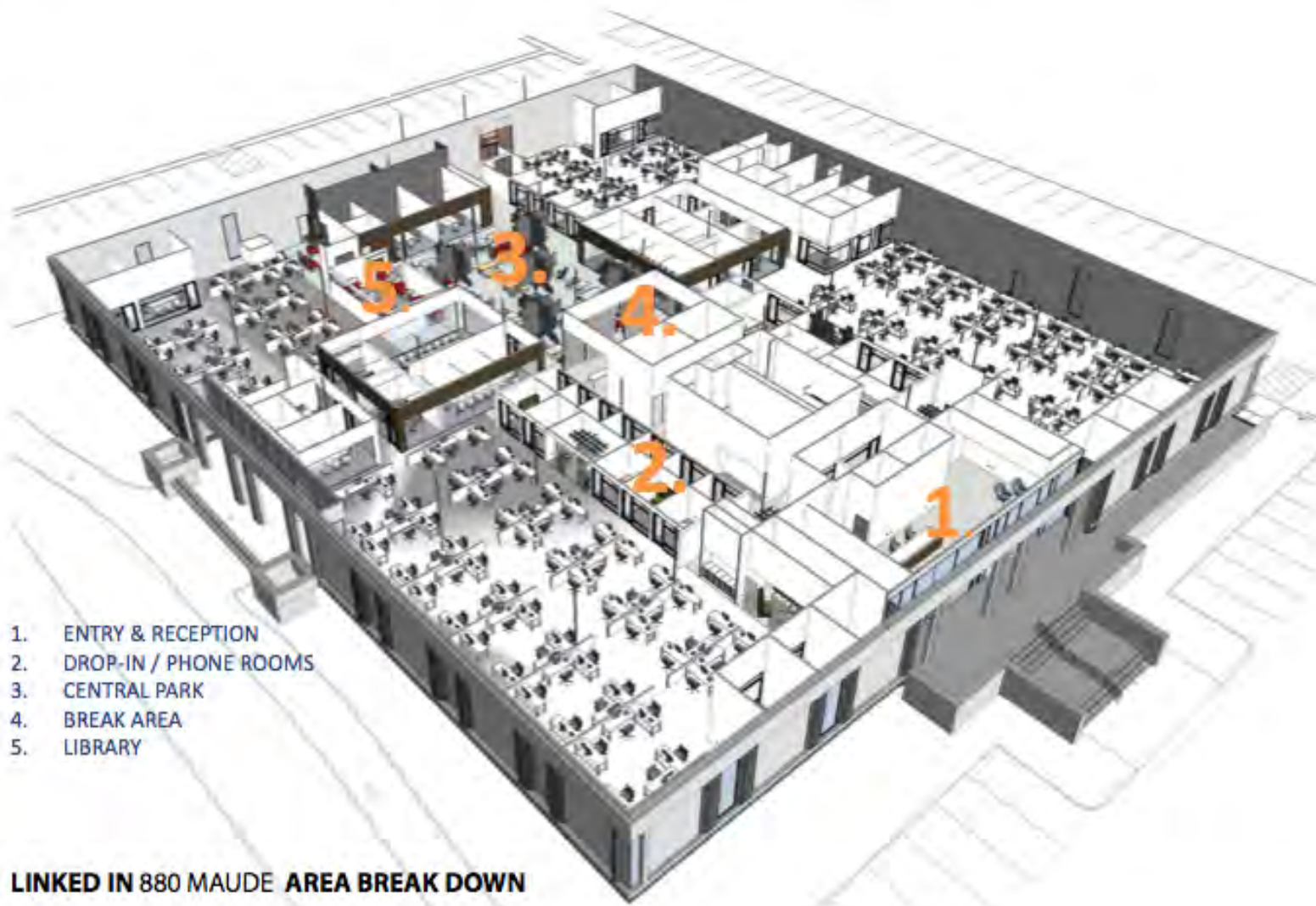




EXTERIOR



EXISTING INTERIOR



1. ENTRY & RECEPTION
2. DROP-IN / PHONE ROOMS
3. CENTRAL PARK
4. BREAK AREA
5. LIBRARY

LINKED IN 880 MAUDE AREA BREAK DOWN

CENTRAL PARK FINISHES



8'-0" BLACK ALUMINUM STOREFRONT WITH
BLACK PAINTED GYP SOFFIT AND FRAME.

POLISHED CONCRETE FLOOR

CHARRED WOOD SCREEN

CENTRAL PARK FINISHES



TANDUS - FULL VOLUME, INDIGO - AREA RUG



LIGMAN DUOMO PENDANT - BLACK METAL



WOOD WALL CLADDING : WONDERWALL, JAGGER



CHARRED WOOD SCREEN

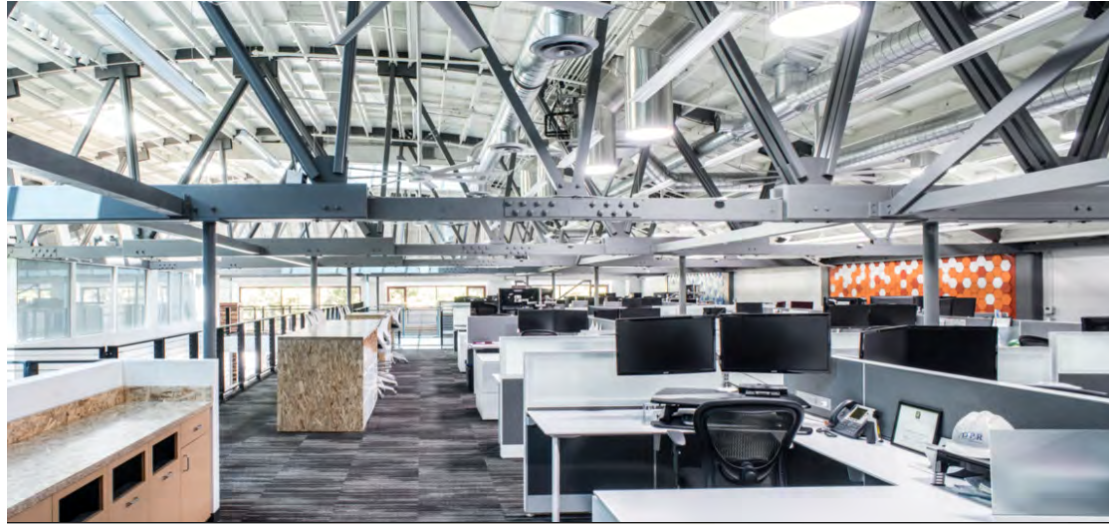


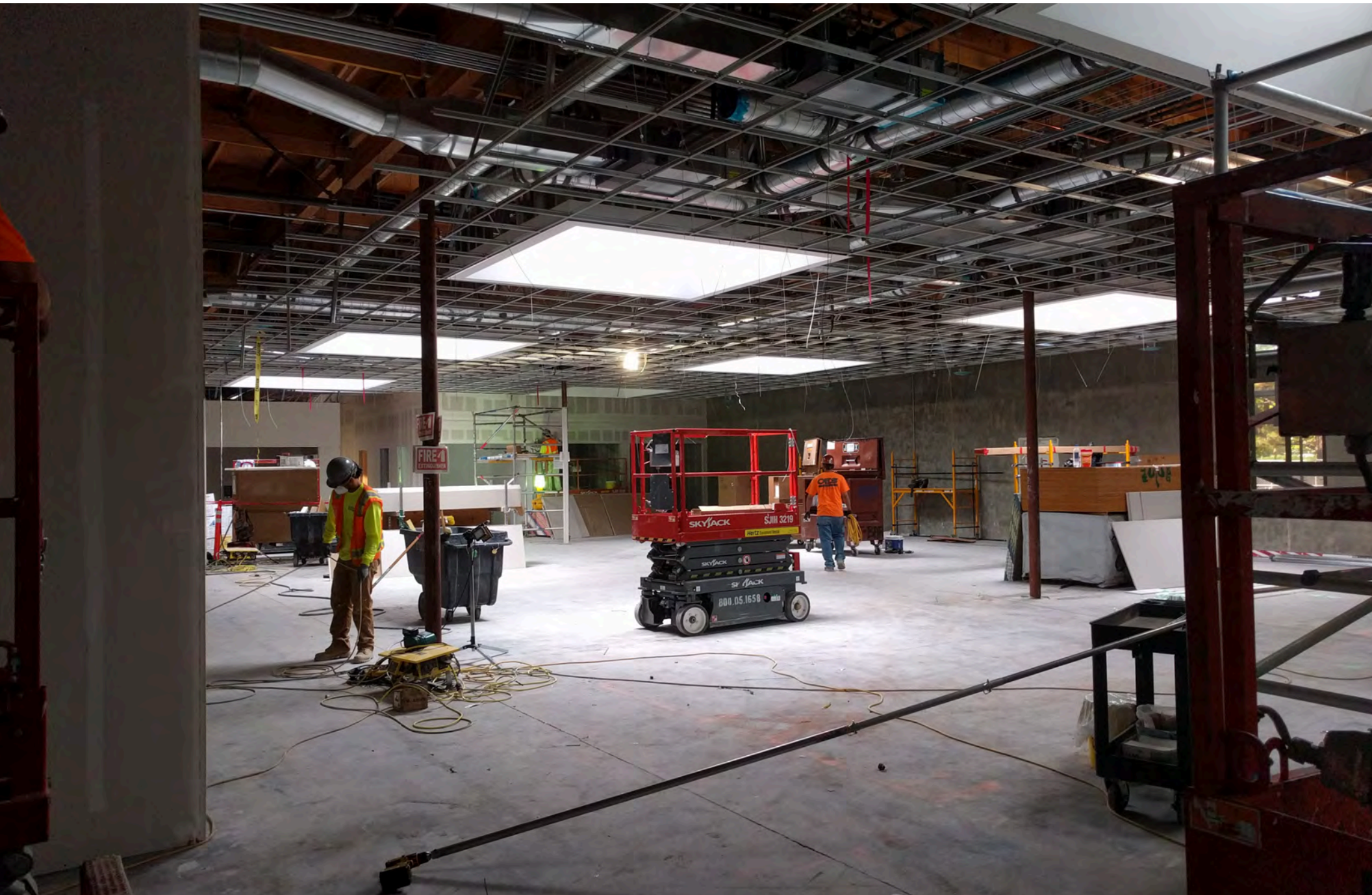
POLISHED CONCRETE FLOORS



IN PROGRESS – NO SKYLIGHTS













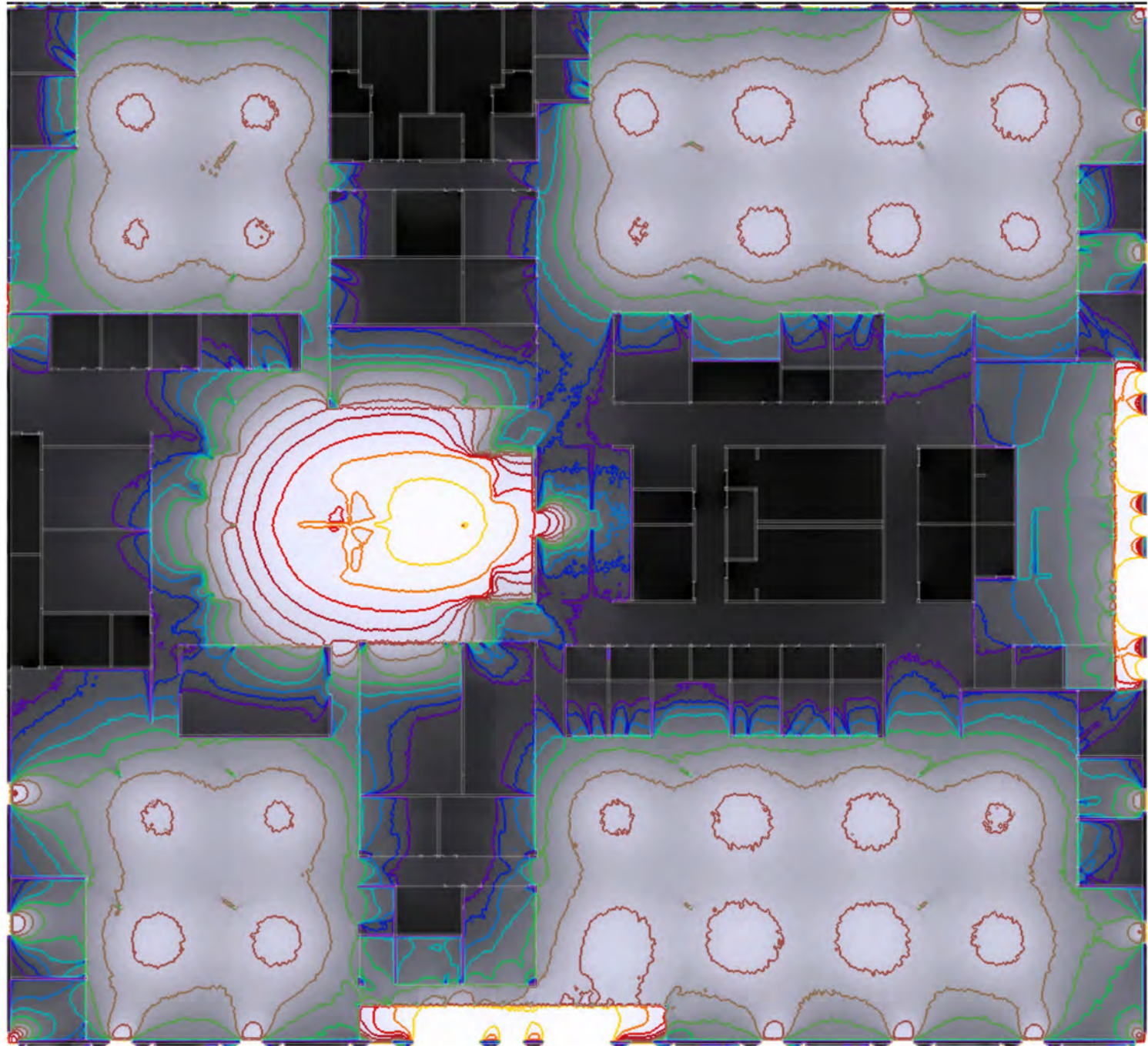
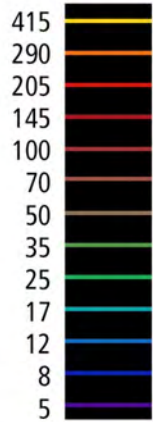
THE HOO

LINDA MAR

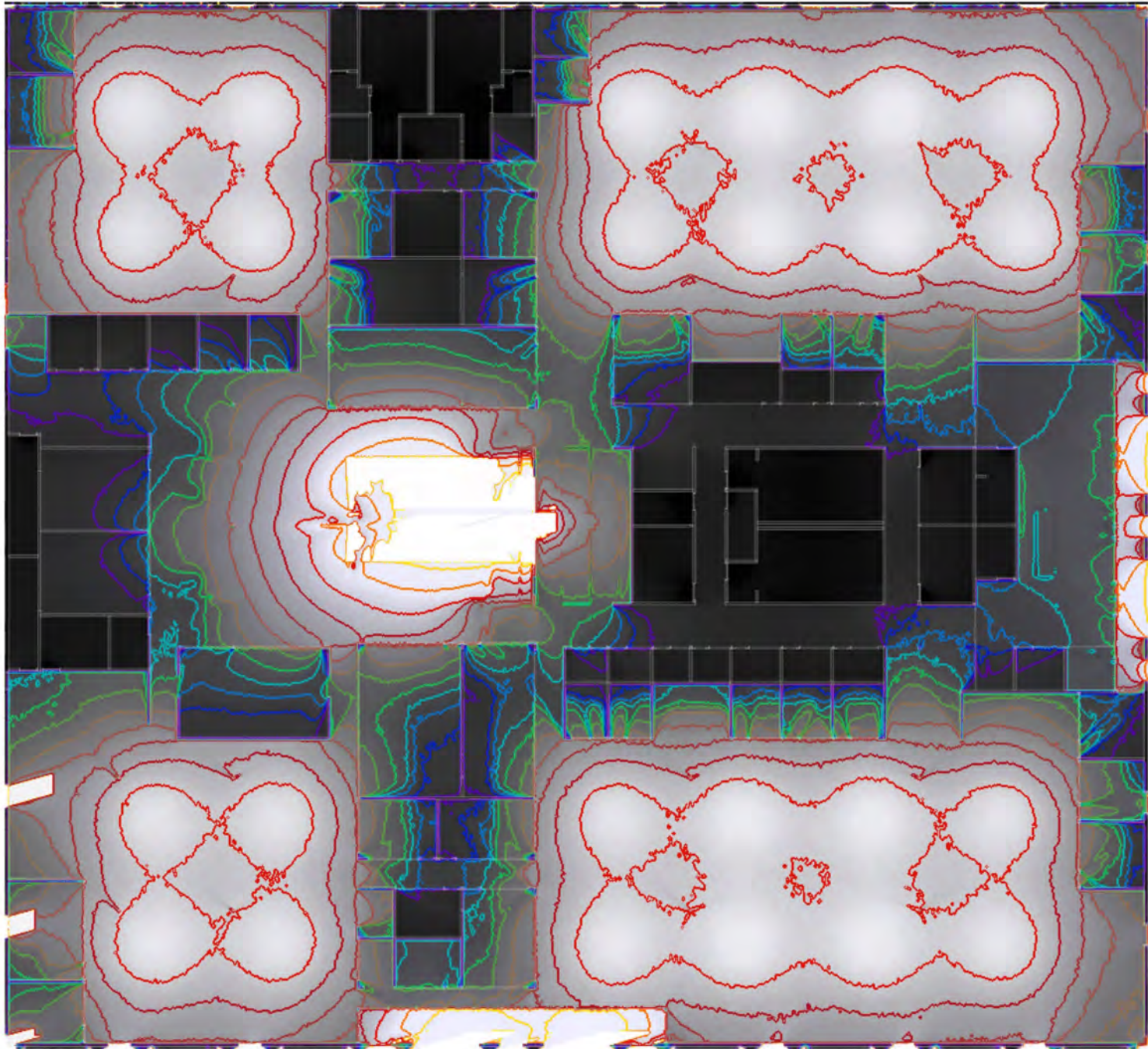
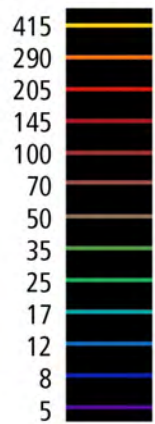
Daylight & Electric Light

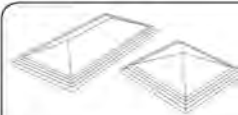
Michael Martinez - Intergal Engineering
Marissa Tucci - Tucci Lighting

footcandles



footcandles





Double Hip & Pyramid Fixed Skylights



Frame Model 800MD

KEY FEATURES

Custom Sizes Available
Prismatic Design
Mill, White, or Bronze Finish available

PRODUCT PROFILE



SPECIFICATIONS

Skylights shall be Sunoptics model 800MD (curb mounted) as manufactured by Sunoptics Skylights, an Acuity Brands Company, 6201 27th Street, Sacramento CA 95822 916/395-4700.

Skylights shall be glazed ready for installation.

Skylight frames shall be fabricated from 6063 T5 aluminum, finish as specified by architect. Frames shall have integral condensation and weepage gutters which drain interior moisture to the outside. Corners shall be mitered and welded. Skylight frames shall be insulated and thermally broken. The acrylic, or polycarbonate, glazing shall be separated from the skylight frame with a wet silicone applied seal.

Skylights shall be glazed using 50% Impact Modified CC2 Prismatic acrylic, or CC1 rated Prismatic polycarbonate in a pyramid or double hip configuration.

Double Hip Units are tested and certified to AAMA/WDMA/CSA1011.5.2/A440-05 to comply with section 2405.5 of the International Building Code.

Note: Multi-glazed units default to include Insulated Thermal Break (ITB), Curb Tape (CTape), Weather Sweep (WSW) and screws. Single-glazed units default to not include any of these options.

Note: Specifications subject to change without notice.

Type	SHGC	U-Value	VLT
Single Glazed Acrylic	51	n/a	74
Single Glazed Poly	51	n/a	70
Double Glazed Acrylic/Acrylic	42	.74	68
Double Glazed Poly/Acrylic	42	.74	83
Triple Glazed Acrylic/Acrylic/Acrylic	33	.82	63
Triple Glazed Poly/Acrylic/Acrylic	33	.82	60

6201 27th Street, Sacramento, CA 95822 | (916) 395-4700 | (800) 289-4700 | (916) 395-9015 fax | scq01@acuitybrands.com | www.sunoptics.com

1 of 2



Motorized Light Louvers With Interior Motor



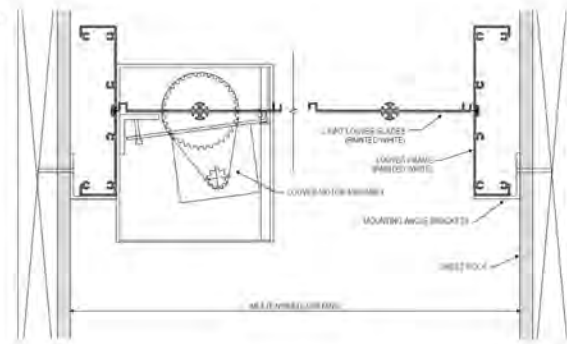
Frame Model 900

KEY FEATURES

Interior motor for retrofit applications

PRODUCT PROFILE

Details Not To Scale



SPECIFICATIONS

Light Control Louvers shall be Sunoptics model 900 motorized as manufactured by Sunoptics Skylights, 6201 27th Street, Sacramento Ca. 95822 916/395-4700.

Louvers shall be factory assembled, ready for installation.

Louver frame and blades shall be fabricated from 6063-T5 aluminum, finish to be baked on enamel, white in color.

Louver frames shall be mechanically joined at the corners. Blades shall be 6" on center, rotating on a 5/8" rigid PVC bearing. Aluminum end plates shall be fastened to the ends of each blade and act as thrust caps against the PVC bearing. End plates shall be attached to an aluminum bar on 1 side for gang operation.

Standard Louvers shall be electrically operated using Sunoptics standard synchronous 115VAC motor unit. The 60hz, 7 Watt motor shall be integrated to the louver assembly and shall be equipped with limit switches at full open and closed positions drawing 6 amps.

A cycle test was performed on the Sunoptics Louver and successfully taken to over 2,000,000 cycles.

6201 27th Street, Sacramento, CA 95822 | (916) 395-4700 | (800) 289-4700 | (916) 395-9015 fax | scq01@acuitybrands.com | www.sunoptics.com

1 of 2

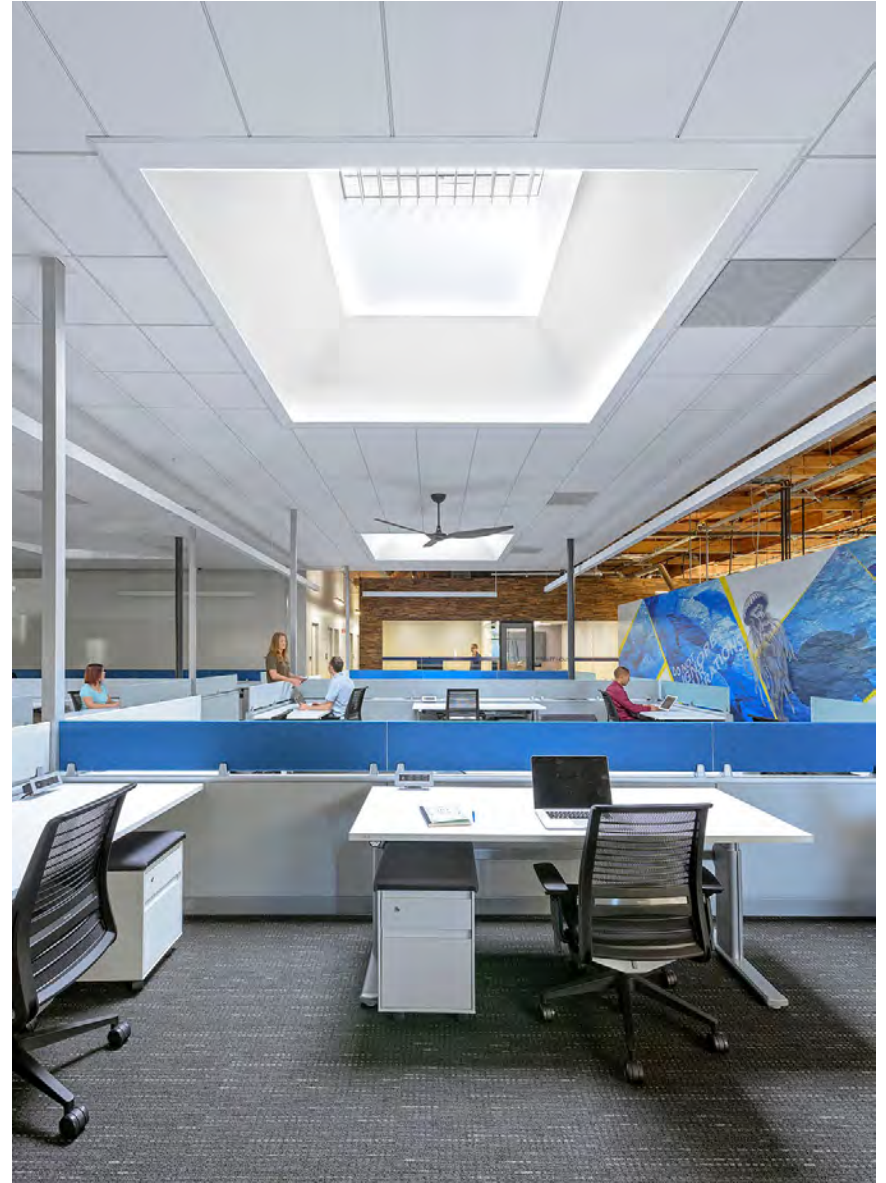














EXISTING



\$17,000

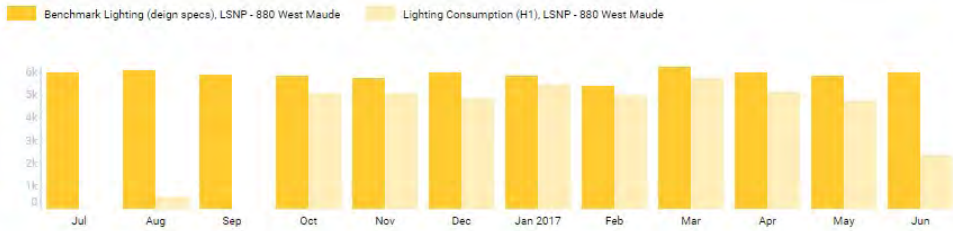
Under electrical budget





LIVE LINK TO
ENERGY DASHBOARD

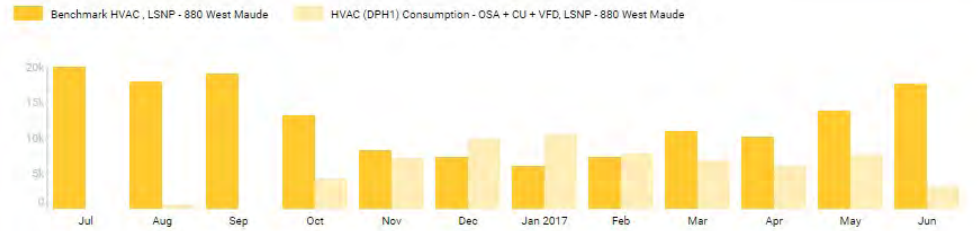
LIGHTING: Benchmark Design Spec vs Actual Use - actual looks about 30% more / Last 12 months



Benchmark Lighting (deign specs), LSNP - 880 West Maude
70,693 kWh

Lighting Consumption (H1), LSNP - 880 West Maude
43,843 kWh

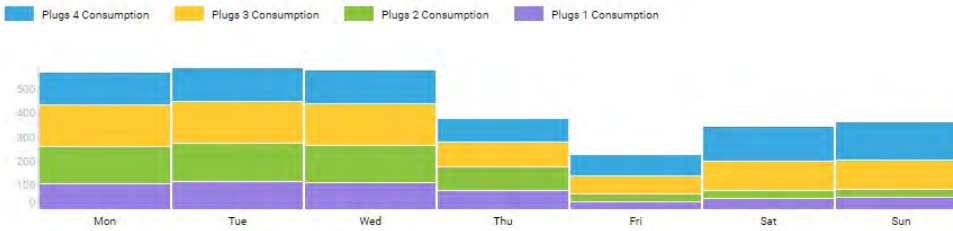
HVAC: Benchmark Design Spec vs Actual Use - actual looks about 30% more / Last 12 months



Benchmark HVAC, LSNP - 880 West Maude
152,108 kWh

HVAC (DPH1) Consumption - OSA + CU + VFD, LSNP - 880 West Maude
64,064 kWh

PLUG LOAD: breakdown between plugs 1, 2, 3, 4 / Last week

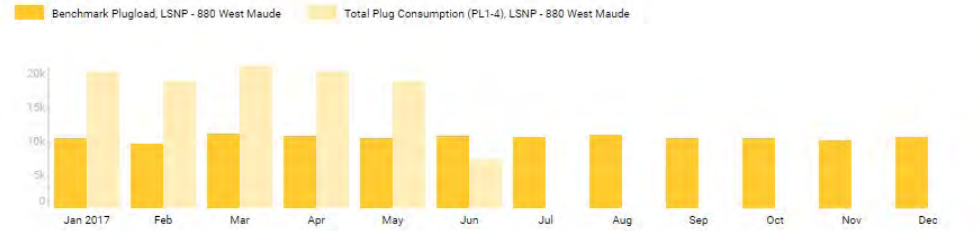


Total
3,072 kWh

Min
228 kWh (Fri)

Max
592 kWh (Tue)

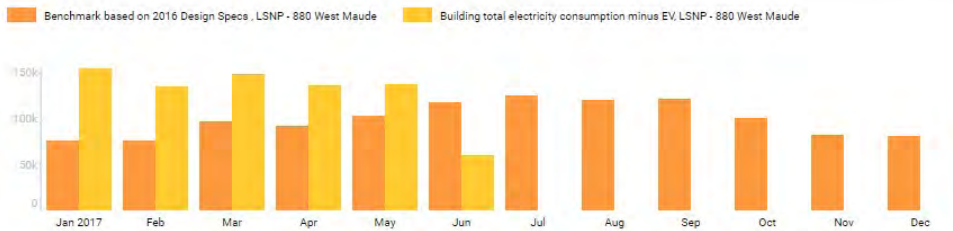
PLUG LOAD: Benchmark Design Spec vs Actual Use - actual use looks double / This year



Benchmark Plugload, LSNP - 880 West Maude
62,312 kWh

Total Plug Consumption (PL1-4), LSNP - 880 West Maude
106,290 kWh

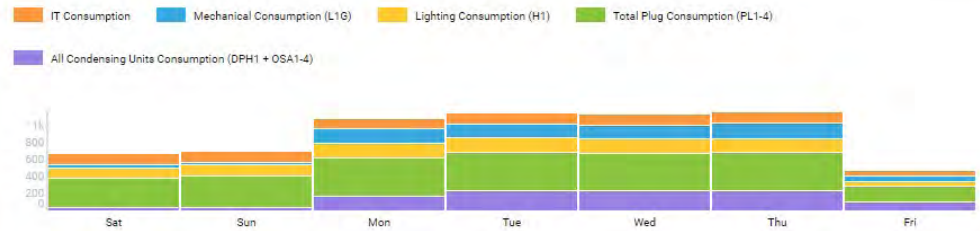
Entire Buildings Performance relative to Design Spec Benchmarks / This year



Benchmark based on 2016 Design Specs, LSNP - 880 West Maude
558,387 kBtu

Building total electricity consumption minus EV, LSNP - 880 West Maude
767,545 kBtu

Breakdown of electrical use / Last 7 days



Total
6,356 kWh

Min
470 kWh (Fri)

Max
1,162 kWh (Thu)



“The lighting is working well. We have been able to reduce the maximum lighting level from 60% to 50%. The occupants seem happy with the space, as we have had relatively few communications with them about issues. They like the architectural design, the open spaces, the natural daylight and the building’s design commitment to protecting the environment.”

- LinkedIn Building Engineer





Thank you!